

GREENHOUSE INDUSTRIAL
PARK 2nd ADD.
SEE PAGE 39

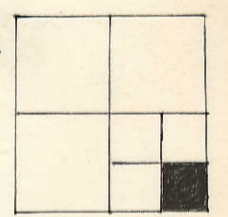
FRED E. Goettsch
277-2007
2-4-07

47
85.83
KELLER'S
SUBD. 48
FIRST

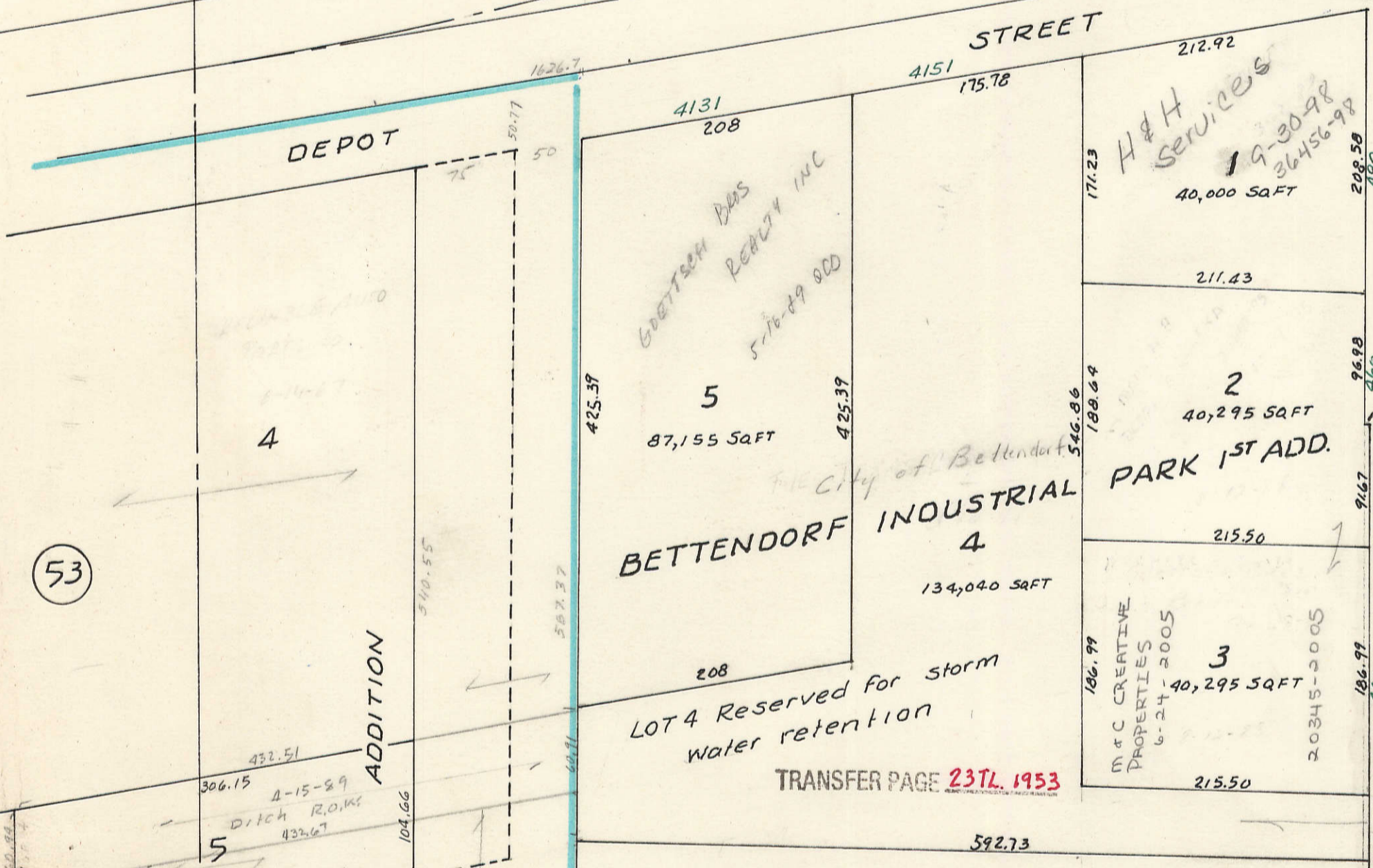
(39)

81ds-366

ALCOA
12-19-46
15051
LDS 87-74



I. E. I. RY. CO.
C. D. & M. RY. CO.
D. R. I. & N. W. RY. CO.



DEPOT STREET
42ND STREET

CITY OF BETTENDORF
7-5-15-89

DUCK CREEK

Section line between Secs 26 & 27

SEC 26

(49)
TOWN OF RIVERDALE

(53)

TRANSFER PAGE 237L 1953

KOCH FUELS, INC.
7-1-82

Section line between Secs 27 & 34

SEC 34

(7)

SE Corner Sec 27-78-4

(27,26)
34,35